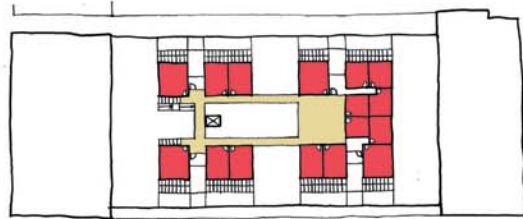




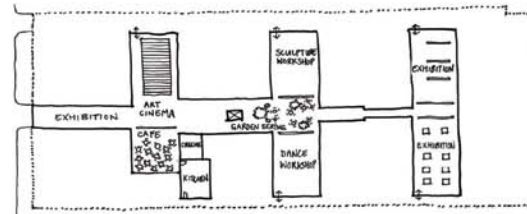
CiAO won an invited competition in February 2004 to design an Arts & Education Centre within the 11,000 sq ft, Grade B listed former TA drill hall on Dalmeny Street, Leith for Out of The Blue Arts & Education Trust. The scheme layout was inspired by monastic & souk patterns of habitation. The new structure will be delicately inserted within the curtilage of the existing hall and is sensitively massed to maintain the existing impression of a single volumn-hall.

Proposals included flexible studio accommodation, rehearsal, performance & exhibition spaces, creche, cafe & a sculpture garden. Working closely with OOTB, designs have been refined on several occasions to incorporate changing requirements. Construction will be separated into two phases, with the first phase providing studio spaces, kitchen & rehearsal/workshop spaces on the ground floor only. The final phase will see the installation of first floor studio accommodation and associated elevator, stairs & balconies.

The building will be constructed from simple products such as birch faced plywood, recycled paper lining boards, sheepwool insulation & translucent polycarbonate sheets. This polycarbonate sheeting will not only allow diffuse natural daylight into studio spaces, but will effectively illuminate both the interior of studios & main spaces by the insertion of high efficiency fluorescent lighting within the timber framework. The majority of internal studio walls will be non-loadbearing to allow future adaptation of spaces, with no 'wet trades' i.e. lining boards left exposed. To further ensure maximum flexibility and reduce costs/waste, all boards will be screw-fixed to timber framework to allow full demountability. Material wastage will be minimised by using standard board sizes to co-ordinate dimensions thus reducing the amount of off-cuts.



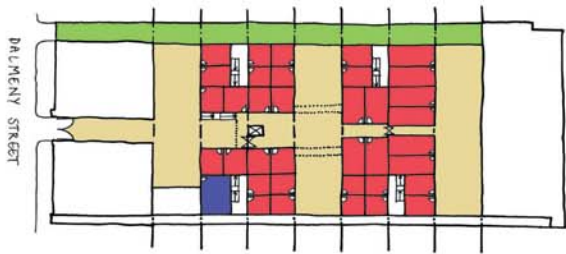
First Floor Plan



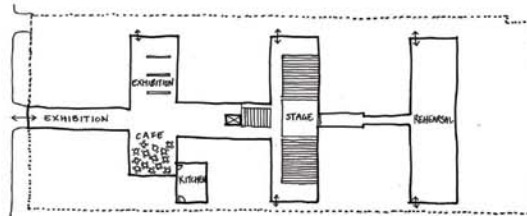
Ground Floor- Public space options



PHASE 2



Ground Floor Plan



PHASE 2

