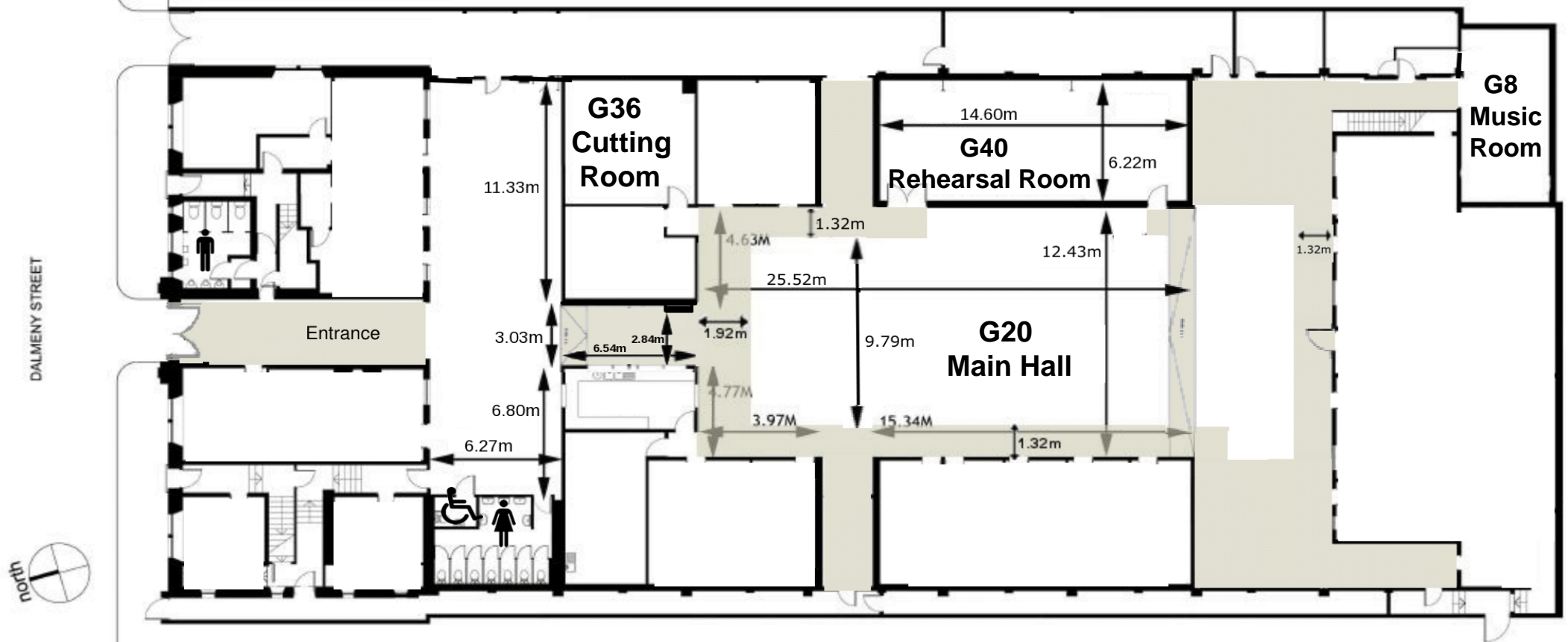


Out of the Blue Drill Hall



Space Hire Technical Specifications

Main Hall

Wooden floor, 25.52m x 12.43m with an extra 6.50m x 12.43m of concrete to the back wall. There is power, lighting and ventilation.

Rehearsal Studio

Sprung wooden floor 14.60m x 6.22m, mirrors, curtains and rigging points for aerial.

Facilities

There are male, female and a unisex accessible toilet with baby changing facilities.

The following are also available, although there may be a cost involved for some:

Tables, chairs and high chairs. A piano. A PA. Pallet jack and ammunition trolley. Ladders to about 7m. Scaffold tower to about 10m. Chain host. A projector, CD player, broadband and WiFi. Flip charts.

For more information on available equipment, please visit outoftheblue.org.uk/spacehire/space-rates

The areas underneath the balcony and all other grey areas must be kept clear at all times for studio access and fire escape routes.